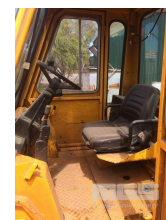


1994 HYSTER FORK TRUCK

Asset Details

Build Date:	1994		
Make:	HYSTER		
Model:			
Series:			
Drive Type:			
Axle Config:			
Body Type:	FORK TRUCK		
Gearbox:			
Transmission:			
Engine Make:			
Engine Size:			
Fuel Type:	GAS		
Diff Make / Size:			
Suspension:			
Ext Colour:			
Tyre Size:			
Tyre Condition:			
Doors:		Seats:	
Volume:		Height:	
GCM:		SWL:	



Length:		Capacity:	
Width:		GVM:	
HP:		Tare:	

Asset Identification

Odometer:		Rego:		State:		Expiry:	
VIN:				PIN:			
Engine No:				Hours:			
Papers:	NO	Keys:		Books:	NO	Service Books:	NO

Features

6 TONNE
HYDRAULIC SIDE SHIFT & FORK POSITIONER
(SOLD IN SITU-LOCATED AT WHYALLA)