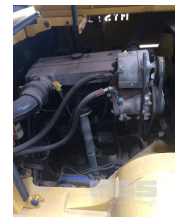




# 1994 HYSTER H600XL FORK TRUCK

## Asset Details

Build Date:	1994
Make:	HYSTER
Model:	H600XL
Series:	
Drive Type:	
Axle Config:	
Body Type:	FORK TRUCK
Gearbox:	
Transmission:	MANUAL TRANSMISSION
Engine Make:	
Engine Size:	
Fuel Type:	DIESEL
Diff Make / Size:	
Suspension:	
Ext Colour:	
Tyre Size:	
Tyre Condition:	



Doors:	Seats:	Length:	Capacity:
Volume:	Height:	Width:	GVM:
GCM:	SWL:	HP:	Tare:

## Asset Identification

Odometer:	Rego:	State:	Expiry:
VIN:		PIN:	
Engine No:		Hours:	
Papers:	NO	Keys:	Books:
			NO
			Service Books:
			NO

## Features

6 TONNE  
DUAL FRONT TYRES, EXTRA WIDE FORK CARRIAGE  
2.4m FORKS  
GOOD FOR CONTAINER WORK  
(SOLD IN SITU- LOCATED AT WHYALLA)