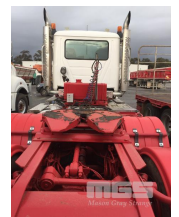




## 2013 MACK CLXT SUPER LINER 6x4 PRIME MOVER LONG NOSE

### Asset Details

Build Date:	6/2013						
Compliance:	6/2013						
Make:	MACK						
Model:	CLXT						
Variant:	SUPER LINER						
Series:							
Body Type:	PRIME MOVER LONG NOSE						
Gearbox:	MACKM DRIVE SPEED						
Transmission:	AUTOMATIC TRANSMISSION						
Engine Make:	MACK MP10						
Engine Size:	685HP						
Fuel Type:	DIESEL						
Diff Make / Size:							
Suspension:	AIRBAG SUSPENSION						
Ext Colour:	WHITE DUCO						
Tyre Size:	11R22.5						
Tyre Condition:	Average						
Doors:	2	Seats:	2	Length:		Capacity:	
Volume:		Height:		Width:		GVM:	26,000kg
GCM:	140,000kg	SWL:		HP:		Tare:	



### Asset Identification

Odometer:	1,463,379	Rego:	BW 88 FG	State:	NSW	Expiry:	
VIN:	6FMT14H31DD804542	PIN:					
Engine No:	MP10-600070163	Hours:					
Papers:	NO	Keys:	1	Books:	NO	Service Books:	NO

### Features

AIR CON, ALLOY RIMS, B TRIPLE RATED, CD PLAYER, CB RADIO, BULL BAR, DRIVING LIGHTS, HYDRAULICS, TIPPER HOIST CONTROLS, 3 x FUEL TANKS & 1 x AD BLUE/DEF TANK  
AUTO GREASE SYSTEM

(LOCATED REGENCY ROAD, FERRYDEN PARK SA)