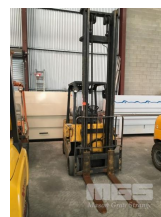


HYSTER S300XL FORKLIFT

Asset Details

Build Date:			
Make:	HYSTER		
Model:	S300XL		
Series:			
Drive Type:			
Axle Config:			
Body Type:	FORKLIFT		
Gearbox:			
Transmission:			
Engine Make:			
Engine Size:			
Fuel Type:	LPG		
Diff Make / Size:			
Suspension:			
Ext Colour:			
Tyre Size:			
Tyre Condition:			
Doors:		Seats:	
Volume:		Height:	
GCM:		SWL:	



Asset Identification

Odometer:		Rego:		State:		Expiry:	
VIN:	A187V10570J	PIN:					
Engine No:	VA10570	Hours:	9385.6 hours				
Papers:	NO	Keys:		Books:	NO	Service Books:	NO

Features

2.1T
HIGH & CLEARVIEW MAST
550cm LIFT HEIGHT
SOLID TYRES
SIDE SHIFT NOT WORKING

KEY #13
BACK TILT FAULTY