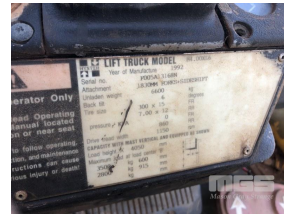




1992 HYSTER H4.00XL6 FORKLIFT

Asset Details

Build Date:	1992		
Make:	HYSTER		
Model:	H4.00XL6		
Series:			
Drive Type:			
Axle Config:			
Body Type:	FORKLIFT		
Gearbox:			
Transmission:			
Engine Make:			
Engine Size:			
Fuel Type:			
Diff Make / Size:			
Suspension:			
Ext Colour:			
Tyre Size:			
Tyre Condition:			
Doors:	Seats:	Length:	Capacity:
Volume:	Height:	Width:	GVM:
GCM:	SWL:	HP:	Tare:



Asset Identification

Odometer:	Rego:	State:	Expiry:
VIN:	PIN:		
Engine No:	Hours: 4,142hours INDICATED		
Papers: NO	Keys:	Books: NO	Service Books: NO

Features

S/NO: F005A13168N
4,000mm LIFT
2 STAGE MAST, SIDESHIFT
3,500kg CAPACITY
SOLID PUNCTURE PROOF TYRES
DIESEL MONOTROL