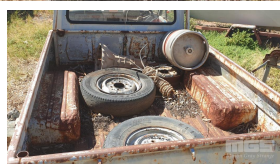


1972 MAZDA B1600 UTILITY

Asset Details

| | |
|----------------------|------------------------|
| Build Date: | 1972 |
| Compliance: | |
| Make: | MAZDA |
| Model: | B1600 |
| Variant: | |
| Series: | |
| Body Type: | UTILITY |
| Engine Size: | MAZDA 1.6L, 4 CYLINDER |
| Transmission: | |
| Fuel Type: | |
| Ext. Colour: | BLUE/GREY/BLACK TRIM |
| Int. Colour: | |
| Doors: | |
| Seats: | |
| Drive Type: | RWD |



Asset Identification

| | | | | | | | |
|-------------------|---------|--------------|--|---------------|--|-----------------------|--|
| Odometer: | UNKNOWN | Rego: | | State: | | Expiry: | |
| VIN: | | | | PIN: | | | |
| Engine No: | | | | Hours: | | | |
| Papers: | | Keys: | | Books: | | Service Books: | |

Features

4 SPEED FLOOR SHIFT MANUAL
COMPLETE RESTORATION REQUIRED, ROLLING