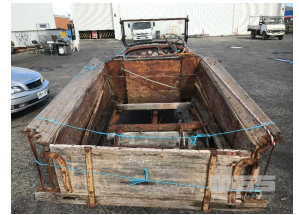


CIRCA 1923 DODGE BROS BUCK BOARD UTILITY

Asset Details

Build Date:	1923
Compliance:	
Make:	DODGE BROS
Model:	BUCK BOARD
Variant:	
Series:	
Body Type:	UTILITY
Engine Size:	4 CYLINDER
Transmission:	
Fuel Type:	PETROL
Ext. Colour:	
Int. Colour:	
Doors:	2
Seats:	
Drive Type:	



Asset Identification

Odometer:		Rego:		State:		Expiry:	
VIN:				PIN:			
Engine No:				Hours:			
Papers:	NO	Keys:		Books:	NO	Service Books:	NO

Features

PARTIALLY RESTORED, TIMBER SPOKED WHEELS,
BONNET/ ENGINE COVER & EXHAUST REPLACED,
ENAMEL BADGE, ORIGINAL DIALS
RESTORATION PROJECT