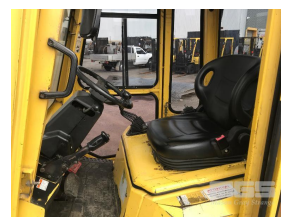


2006 HYSTER H500DX FORKLIFT

Asset Details

Build Date:	2006		
Make:	HYSTER		
Model:	H500DX		
Series:			
Drive Type:			
Axle Config:			
Body Type:	FORKLIFT		
Gearbox:			
Transmission:			
Engine Make:			
Engine Size:	6 CYLINDER		
Fuel Type:	DIESEL		
Diff Make / Size:			
Suspension:			
Ext Colour:			
Tyre Size:			
Tyre Condition:			
Doors:		Seats:	
Volume:		Height:	
GCM:		SWL:	



Asset Identification

Odometer:		Rego:		State:		Expiry:	
VIN:				PIN:			
Engine No:				Hours:	17,036hours		
Papers:		Keys:		Books:		Service Books:	

Features

5 TONNE
 S/NO: A232R03232D
 2 STAGE MAST
 SIDE SHIFT
 TYNE ADJUST
 ENCLOSED FLOATING CAB
 A/C
 3 SPEED MONOTROL PEDAL
 SOLID TYRES
 ISOLATOR
 EXTINGUISHER

KEY #43