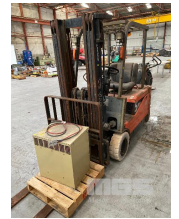


# 1997 TOYOTA 5FBE18 ELECTRIC FORKLIFT

## Asset Details

|                   |                   |         |  |
|-------------------|-------------------|---------|--|
| Build Date:       | 1997              |         |  |
| Make:             | TOYOTA            |         |  |
| Model:            | 5FBE18            |         |  |
| Series:           |                   |         |  |
| Drive Type:       |                   |         |  |
| Axle Config:      |                   |         |  |
| Body Type:        | ELECTRIC FORKLIFT |         |  |
| Gearbox:          |                   |         |  |
| Transmission:     |                   |         |  |
| Engine Make:      |                   |         |  |
| Engine Size:      |                   |         |  |
| Fuel Type:        |                   |         |  |
| Diff Make / Size: |                   |         |  |
| Suspension:       |                   |         |  |
| Ext Colour:       |                   |         |  |
| Tyre Size:        |                   |         |  |
| Tyre Condition:   |                   |         |  |
| Doors:            |                   | Seats:  |  |
| Volume:           |                   | Height: |  |
| GCM:              |                   | SWL:    |  |



|         |  |           |  |
|---------|--|-----------|--|
| Length: |  | Capacity: |  |
| Width:  |  | GVM:      |  |
| HP:     |  | Tare:     |  |

## Asset Identification

|            |  |        |         |        |    |                |  |
|------------|--|--------|---------|--------|----|----------------|--|
| Odometer:  |  | Rego:  | S49 SXG | State: | SA | Expiry:        |  |
| VIN:       |  | PIN:   |         |        |    |                |  |
| Engine No: |  | Hours: |         |        |    |                |  |
| Papers:    |  | Keys:  |         | Books: |    | Service Books: |  |

## Features

MAX LIFT CAPACITY: 1,200kg  
 MAX LIFT HEIGHT: 4,300mm  
 3 STAGE MAST  
 SOLID TYRES  
 WITH CHARGER, 415V

ALL FAULTS, BATTERY FAULTY