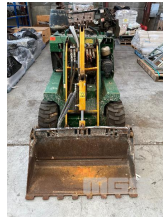




KANGA PW628 MINI LOADER

Asset Details

Build Date:	
Make:	KANGA
Model:	PW628
Series:	
Drive Type:	
Axle Config:	
Body Type:	MINI LOADER
Gearbox:	
Transmission:	
Engine Make:	
Engine Size:	
Fuel Type:	
Diff Make / Size:	
Suspension:	
Ext Colour:	
Tyre Size:	
Tyre Condition:	
Doors:	Seats:
Volume:	Height:
GCM:	SWL:



Length:	Capacity:
Width:	GVM:
HP:	Tare:

Asset Identification

Odometer:	Rego:	State:	Expiry:
VIN:	PIN:		
Engine No:	Hours:	784	
Papers:	Keys:	Books:	Service Books:

Features

S/NO: 1S07074
 WHEELED, POWERED BY HONDA GX690 PETROL ENGINE
 POWER RATING 16.5kw
 FITTED WITH 4 IN 1 BUCKET, WITH ADDITIONAL ATTACHMENTS, INCL
 AUGER DRIVE UNIT, DIGGA ORBITAL MOTOR
 MOD: DGSL-100 WITH 3 AUGERS & CONCRETE MIXER
 TRENCHING ATTACHMENT
 MOD: UNI900 TRENCHER
 KEY# 40

MOUNTED ON
 2014 BROOKS 5 x 8 TANDEM AXLE PLANT TRAILER
 REG: S987 TEI
 VIN: 6T9T2700SE0D1R033
 REAR LOAD RAMPS, HINGED, BALL HITCH, BRAKES, JOCKEY WHEEL
 FRONT MOUNT TOOL BOX