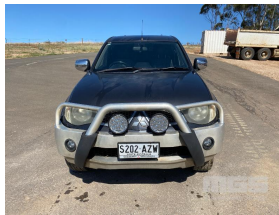




2014 MITSUBISHI TRITON GLX-R DUAL CAB UTE 4X4

Asset Details

| | |
|---------------|--------------------|
| Build Date: | 3/2014 |
| Compliance: | |
| Make: | mitsubishi |
| Model: | TRITON |
| Variant: | GLX-R |
| Series: | |
| Body Type: | DUAL CAB UTE |
| Engine Size: | |
| Transmission: | MANUAL |
| Fuel Type: | TURBO DIESEL |
| Ext. Colour: | GUNMETAL GREY DUCO |
| Int. Colour: | BLACK CLOTH |
| Doors: | 4 |
| Seats: | 5 |
| Drive Type: | 4X4 |



Asset Identification

| | | | | | | | |
|------------|-----------------------|--------|----------|--------|----|----------------|--|
| Odometer: | 293,043kms SHOWING | Rego: | S202 AZW | State: | SA | Expiry: | |
| VIN: | MMAJNKB40FD001141 | PIN: | | | | | |
| Engine No: | | Hours: | | | | | |
| Papers: | YES | Keys: | | Books: | | Service Books: | |

Features

ABS, AIR BAG, AIR CON, ALLOY WHEELS, BULL BAR, CANOPY, CENTRAL LOCKING, POWER WINDOWS, SIDE STEP, SPOT LIGHTS, TOW BAR, TITAN 2 DRAWER TOOL BOX

NOTE: FADED PAINT, CRACKED TAIL LIGHT, GENERAL WEAR & TEAR