

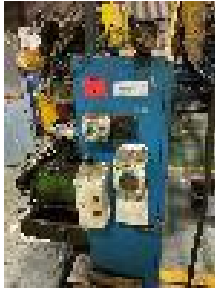
| LOT | QTY | DESCRIPTION | NOTE |
|-----|-----|-------------|------|
|-----|-----|-------------|------|

1



HARE PRESS  
1994 63HP HYDRAULIC PRESS

2



ADIGE TUBE CUTTER  
ADIGE TS70 SAW WITH BUNDLE LOADER  
CUTTING CAPACITY: 10/85mm,  
DISC DIAMETER: 250x2mm / 275x2.5 mm

3



MARAND COIN & BURNISH MACHINE  
MARAND PRECISION AUTO FEED COINING & BURNISHING  
MACHINE

4



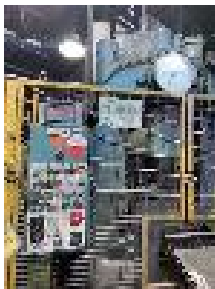
MARAND COIN & BURNISH MACHINE  
MARAND PRECISION AUTO FEED COINING & BURNISHING  
MACHINE

5

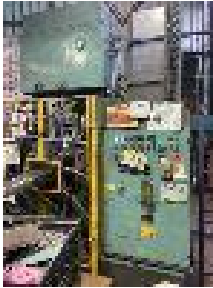
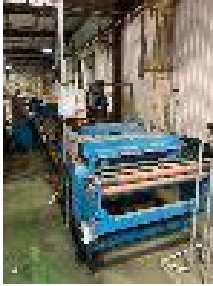





DORST PRESS 1  
YEAR 1964 TPA100/3 100T MECHANICAL POWDER  
COMPACTING PRESS,  
BOTTOM RAM CAPACITY 20T ,  
TYPE A DIE SET, ONLINE 250kg POWDER LOAD HOPPER  
CAPACITY,  
MAXIMUM 15 STROKES/MIN, MECHANICAL FILLING SHOE  
WITH OPTION FOR CAM DELAY

6



DORST PRESS 2  
YEAR 1977 TPA100/3 100T MECHANICAL POWDER  
COMPACTING PRESS,  
BOTTOM RAM CAPACITY 20T,  
TYPE A DIE SET , ONLINE 250kg POWDER LOAD HOPPER  
CAPACITY,  
MAXIMUM 15 STROKES/MIN, MECHANICAL FILLING SHOE  
WITH OPTION FOR CAM DELAY.

| LOT | QTY | DESCRIPTION   | NOTE  |
|-----|-----|---|---|
| 7   |     |    | <p>DORST PRESS 3<br/> YEAR 1987 TPA100/3 100T MECHANICAL POWDER<br/> COMPACTING PRESS,<br/> BOTTOM RAM CAPACITY 30T,<br/> TYPE A DIE SET , ONLINE 250kg POWDER LOAD HOPPER<br/> CAPACITY,<br/> EQUIPPED WITH PQC/1 CONTROLLER, MAXIMUM 18<br/> STROKES/MIN, MECHANICAL FILLING SHOE WITH OPTION<br/> FOR CAM DELAY.</p> |
| 8   |     |    | <p>CUT TO LENGTH LINE<br/> STRAIGHTENS &amp; CUTS SLIT COIL INTO SHEET, ADDING<br/> EMBOSS FEATURES AND/OR PERFORATIONS<br/> MORGAN GUILOTINE.</p>  |
| 9   |     |   | <p>CVA PRESS 1<br/> 50 TONNE STAMPING PRESS WITH SOUND BOOTH<br/> ENCLOSURE, INCLUDING DE-COILER AND RE-COILER</p>  |
| 10  |     |  | <p>CVA PRESS 2<br/> STAMPING PRESS WITH SOUND BOOTH ENCLOSURE,<br/> INCLUDING DE-COILER AND RE-COILER</p>   |
| 11  |     |  | <p>PERF PRESS<br/> 110T STAMPING PRESS WITH SOUND BOOTH ENCLOSURE,<br/> INCLUDING DE-COILER AND RE-COILER</p>   |

| LOT | QTY | DESCRIPTION | NOTE |
|-----|-----|-------------|------|
|-----|-----|-------------|------|

12



STEAM PLANT BOILER  
 SUPERHEATED STEAM BATCHING/KETTLE PLANT -  
 PROGRAMMABLE  
 ALFAREL VS100 VERTICAL TUBELESS BOILER. 100kw, 750  
 DPA, 460 LITRE

13



SINTERING FURNACE  
 FURNACE: ELECTRICALLY HEATED PURE NITROGEN  
 ATMOSPHERE WITH NO ADMIXED HYDROGEN OR METHANE  
 GASSES.  
 FURNACE HAS 6 EFFECTIVE ZONES  
 RAPID DE-LUBE ZONE (RBO), GAS FUELLED  
 PRE HEAT ZONE. ELECTRICAL POWERED  
 OXIDE REDUCTION ZONE  
 HIGH HEAT SINTERING ZONE, ELECTRICAL POWERED.  
 CONTROLLED POST COOL SECTION  
 SLOW COOL AMBIENT TEMP. ZONE  
 24" MESH BELT  
 300kg/HR THROUGHPUT RATE APPROX. 40,000 PARTS PER 8  
 HOUR SHIFT  
 RUN HOURS AS OF 21/02/2023: 50,366 hours

HIGH HEAT ADDITIONS IN 2013,  
 SINTERITE 3-ZONE CERAMIC MUFFLED ELECTRICALLY  
 HEATED CHAMBER  
 QTY 3 75 KVA POWER TRANSFORMERS  
 QTY 6 TYPE R THERMOCOUPLE ASSEMBLIES  
 QTY 36 SIC HEATING ELEMENTS INSTALLED  
 NEW FURNACE CONTROL PANEL (RBO + 5 ZONES)  
 DIGITAL RECORDER FX 1010 8 PROCESS CHANNELS + 2  
 SPARE  
 FLEX COOLING CHAMBER 1550mm (L)

COOLING WATER MANIFOLD CONTROL OF 3 COOLING  
 CHAMBERS