

LOT	QTY	DESCRIPTION	NOTE
-----	-----	-------------	------

RECEPTION

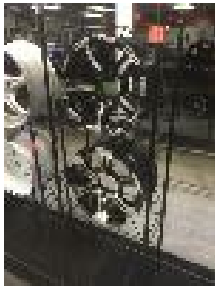
1 5 x FLOOR MATS, NANKANG MAXXIS, 150 x 85 & 120 x 85cm



2 4 x BLUE FLOOR MATS, 160 x 100cm APPROX



3 2 x NEW DISPLAY ALLOY WHEELS, MULLINS, 8/16, 8.5'17" & RACK



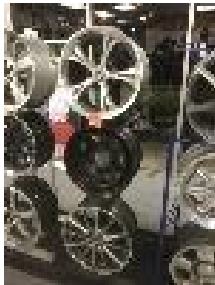
4 NEW DISPLAY RIMS, 1 x ALLOY ROH 18 x 10" & 1 x STEEL DYNAMIC 15 x 10" & STAND

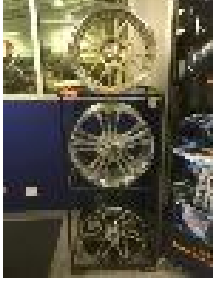



5 3 x NEW DISPLAY ALLOY RIMS, ROH, 17 x 8", PERFORMANCE 17 x 8", CSA 17 x 8" & STAND



6 3 x NEW DISPLAY ALLOY RIMS, ALLOY PERFORMANCE 17 x 8", STEEL 17 x 7", ALLOY PERFORMANCE 17 x 7" & STAND



LOT	QTY	DESCRIPTION	NOTE
7		3 x NEW DISPLAY ALLOY RIMS, PERFORMANCE 19 x 8", 18 x 8", 17 x 7" & STAND	
8		3 x NEW DISPLAY ALLOY RIMS, SPEEDY 19 x 9", HP 21 x 8", SPEEDY 18 x 8" & STAND	
9		RIM DISPLAY STAND & GT RADIAL DISPLAY RIM & TYRE	
10		SERVICE COUNTER, TIMBER, 4.85 x 2.2m	
11		DESKTOP PC HP INTEL CORE 2P/N E1090AU & KEYBOARD SAMSUNG PRINTER MONOCHROME, ML1865 & EMACH 17" LCD MONITOR	
12		PAIR FALCON PORCELAIN MODELS, XC & XY GT FALCONS & 2 x GT RADIAL CUPS	

LOT	QTY	DESCRIPTION	NOTE
13		7 x WHEEL CAPS, CSA, NEW	
14		2 x WALL MOUNT SHELF UNITS 3 TIER.	
15		2 x SHOP STOOLS, TYRE MAX, BLACK VINYL, CHROME BASE	
16		NEW WHEEL NUTS, LOCKING, 19 x SETS, PLUS 7 x DEPTH GAUGES	
17		2 x TYRE INFLATION GAUGES, PRESSURE GAUGES & 2 x PACKS WHEEL LOCK NUTS	
18		7 x WESLAKE VACUUM FLASKS, GT RADIAL FOOTY, (HAVE A KICK) & NEW CAPS	

LOT	QTY	DESCRIPTION	NOTE
-----	-----	-------------	------

19



WALL DISPLAY LIGHT MAXXIS

20



SACK TRUCK WITH TYRE CARRY BASE

BACK ROOM

21



OFFICE DESK, BLACK WITH SHELVES, 140 x 73cm & CONTENTS STATIONERY, ETC

22



CASIO DIGITAL TILL
MOD: SE-G1
S/NO: EX256398302268
WITH KEY

23



TIMBER WALL UNIT, 5 DOOR, 190 x 90cm
NOT CONTENTS.

LOT	QTY	DESCRIPTION	NOTE
-----	-----	-------------	------

24



TIMBER WALL UNIT, 5 DOOR, 190 x 90cm
NOT THE CONTENTS

25



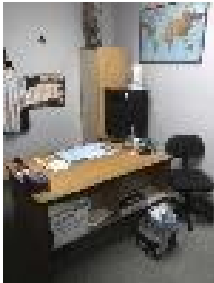
TIMBER WALL UNIT, 5 DOOR, 190 x 90cm
NOT THE CONTENTS.

26



TIMBER WALL UNIT, 5 DOOR, 190 x 90cm
NOT THE CONTENTS

27



TIMBER DESK, 87 x 140cm, COAT CUPBOARD, SMALL 2 DOOR
STORAGE CUPBOARD, 3 DRAWER SET & 2 DRAWER, BLACK
STEEL FILING CABINET

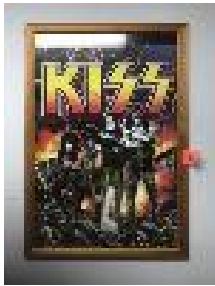
28



TIMBER LAMINATE WALL UNIT, 176 x 186cm, 2 DOOR, 3
DRAWER, 2 x GLASS DISPLAY SHELVES
NOT THE CONTENTS.

LOT	QTY	DESCRIPTION	NOTE
-----	-----	-------------	------

29



GLASS FRAMED KISS POSTER, 68 x 98cm

30



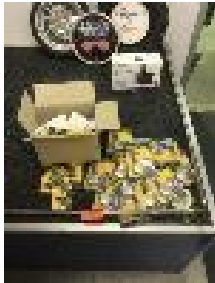
"THE INDIAN" FIGURE, 60cm

31



HOOVER VACUUM CLEANER, ESSENTIAL

32



30 (APPROX) x TYRE PRESSURE & DEPTH GAUGES

33






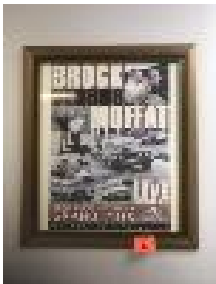










GT RADIAL, MAXXIS & FORD RACING CLOCKS TOTAL OF 3 .

34



PROMOTIONAL PRODUCTS, 20 (APPROX) x SAILUN HATS, FOOTBALL & SOCCER BALL, CUPS, ETC

LOT	QTY	DESCRIPTION	NOTE
35		2 x SHOP STOOLS, TYRE MAX, BLACK VINYL, CHROME BASE	
			
36		2 x SHOP STOOLS, TYRE MAX, BLACK VINYL, CHROME BASE	
			
37		COIN OPERATED CAN FRIDGE, 240V	
			
38		4 x VISITORS CHAIRS & POLAR CLEAR WATER COOLER, KETTLE, ACCESSORIES & KIDS TOY CORNER	
			
39		GLASS FRAMED FORD FALCON GTHO POSTER, PHASE III XW-XC, 101 x 70cm	
			
40		BROCK v MOFFAT POSTER, 2000 QANTAS AUST, GRAND PRIX, 72 x 62cm	
			
41		GLASS FRAMED XYGT FALCON POSTER, 101 x 70cm	
			

LOT	QTY	DESCRIPTION	NOTE
42		MAGAZINE RACK & MAGAZINES, 123 x 130cm, 10 TIER	
			
43		TV, KOGAN 42" LCD WITH 2 x REMOTES & WALL BRACKET	
			
44		XA GT PRINT FRAMED AND GLAZED	
			
45		GLASS FRAMED, BROCK 1979 TORANA HATCHBACK MARLBORO 05	
			
46		2 x COUCHES & CORNER PIECE, (SEATS 4) GREY FABRIC WITH 2 PLANTS. CUSHIONS & FLOOR MAT	
			
47		6 x GLASS FRAMED PRINTS, FALCON GT'S, COMMODORES & LJ TORANA	
			
48		KAREOKE STAND, BLUE/GREY, BUILT IN LIGHT, 237 x 120 x 63cm (H)	
			
49		4 x GLASS FRAMED PRINTS, PETER BROCK, ALLAN MOFFAT & CARS	
			

LOT	QTY	DESCRIPTION	NOTE
50		WORKSHOP BLUE SAFETY TYRE INFLATION FRAME	
			
51		3 x SAFETY SIGNS & BATTERIES SIGN	
			
52		6 x PROMOTIONAL FLAGS WITH STANDS	
			
53		AIR COMPRESSOR, G FORCE MOBILE, 240V, 2HP	
			
54		FIBREGLASS SPA IN TIMBER FRAME, IN BUILT PUMPS, 6 PERSON AND COVER . IN GOOD ORDER.	
			
54a		NEC WINDOW TYPE ROOM A/C MOD: RH188 240V COOLING CAP: 4880w , 11.8AMP HEATING CAP: 4920w, 11.7AMP	
			

LOT	QTY	DESCRIPTION	NOTE
-----	-----	-------------	------

55  2 x ALUMINIUM FRAME WINDOWS, SLIDING GLASS, 183 x 100cm & 150 x 122cm, BRONZE OLIVE.

56  REPCO ON CAR BALANCER
TYPE: W330
415V, 2.2kw

57  SICAM TYRE CHANGER, 19"
MOD: GRIFONE SL506
PNEUMATIC-ELECTRIC
TILT BACK HEAD

58  SUN WHEEL BALANCER, COMPUTER BALANCE
DIGITAL READOUT, 415V & HAND TOOLS

59  WALL FAN, 70cm, 240V

LOT	QTY	DESCRIPTION	NOTE
-----	-----	-------------	------

60

HOOVER 480 LITRE FRIDGE FREEZER, MICROWAVE, 4 x CHAIRS & TABLE, HOOVER VACUUM CLEANER, RADIOS, & KITCHENWARE (CONTENTS OF KITCHEN)



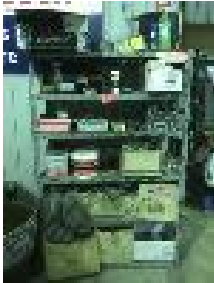
61

TYRE SUBMERSION TANK, 106cm DIAMETER, 40cm DEEP



62

WHEEL NUTS, TUBES, WHEEL CAPS, CLEANING PRODUCTS, CD, RADIO, RACK & CONTENTS



63

POWER SUPPLY BOLLARD, 1/2" IMPACT GUN , IMPACT SOCKETS & RETRACTABLE AIR HOSE. ELECTRICAL DISCONNECTION REQUIRED.




64

2 x STEEL A-FRAME LADDERS


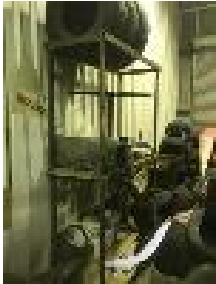







LOT	QTY	DESCRIPTION	NOTE
65		WHEEL WEIGHTS, VALVES & WHEEL COVERS, RACK & CONTENTS	
66		WHEEL BALANCER, BEISSBARTH MICROTEC 840 DIGITAL READOUT, 240V & HAND TOOLS	
67		POWER SUPPLY BOLLARD, 1/2" IMPACT GUN , IMPACT SOCKETS & RETRACTABLE AIR HOSE ELECTRICAL DISCONNECTION REQUIRED.	
68		SICAM TYRE CHANGER, 19" MOD: GRIFONE SL506 PNEUMATIC-ELECTRIC TILT BACK HEAD WITH CLAMP EXTENDER SET	
69		16 (APPROX) x USED TYRES, GOODRICH, YOKOHAMA, ROAD HUGGER, ETC 1 BAY.	
70		7 x USED TYRES, 225/16. 235. 195/15. 275/70, BRIDGESTONE, KHUMO, MAXXIS 1 BAY.	

LOT	QTY	DESCRIPTION	NOTE
71		16 x USED TYRES, 195/15, 155/14, 165/14, 185/14, 215/15, 205/16, DUNLOP, BRIDGESTONE, CONTINENTAL, ETC	
72		PAIR USED 255/70/16 YOKOHAMA GEOLANDER TYRES	
73		9 x USED TYRES, 195/14, 175/15, 195/14, 185/15, 205/15, FIRESTONE, ATREZZO, SAILUN 1 BAY	
74		9 x USED TYRES, 205/15, 205/16, 205/15C, 215/16C, 195/16C, 205/16C, HIFLY, BRIDGESTONE, NEXEN, 1 x BAY	
75		5 x USED & 1 x NEW, 215/14, 255/15, 1 x NEW HIFLY 195R14, 1 x BAY	
76		9 x USED TYRES, 205/16, 215/16, 222/16, 185/16, 225/16, RADIAL, CONTINENTAL, TOYO, 1 x BAY	
77		10 x USED TYRES, 195/15C, 215/15, BRIDGESTONE, YOKOHAMA, HIFLY, 1 x BAY	
78		7 x USED TYRES, 225/16, 265/16, 245/16, BRIDGESTONE, DUNLOP, 1 x BAY	


LOT	QTY	DESCRIPTION	NOTE
79		8 x USED TYRES, 205/16, 185/13, GOODYEAR, DAYTON, 1 x BAY	
80		8 x USED TYRES, 225/16, 195/15, 235/18, BRIDGESTONE, HIFLY, 1 x BAY	
81		6 x USED TYRES, 265/18, 265/16, 205/16, BRIDGESTONE, TRIANGLE, 1 x BAY	
82		4 x USED ALLOY WHEELS, FORD PROBE, 17 x7"	
83		ATLAS COPCO AIR REFRIGERATION UNIT MOD: F016 240V	
84		SCREW COMPRESSOR, INGERSOLL RAND SSR-EP7.5/50 24CFM ALL FAULTS	
85		AIR COMPRESSOR, CLISBY V-TWIN MOBILE, 16CFM, 3HP, 240V	

LOT	QTY	DESCRIPTION	NOTE
86		SHOCK ABSORBERS, FUEL FILTERS, OIL FILTERS, ROTOR DISCS, SUSPENSION BOLTS & IGNITION LEADS, CONTENTS OF SHELF	
			
87		UPRIGHT AIR RECEIVER, 135 x 30cm DIAMETER WITH PRESSURE GAUGE	
			
88		AIR COMPRESSOR, SWAN V-TWIN 415V, 5HP, 20CFM	
			
89		BEARING PRESS, 12T, RISE & FALL TABLE WITH PLATES	
			
90		DOUBLE ENDED BENCH GRINDER, CLARKE, 8", 240V	
			
91		AIR CHISEL SET, TOOLBOX, SCREW DRIVER SETS, OILS, BRAKE FLUID, ATF, WHEEL TRIMS, CUTTING DISCS, CONTENTS OF BENCH	
			

LOT	QTY	DESCRIPTION	NOTE
92		STEEL SHOP BENCH, 2 TIER WITH 6" OFFSET VICE, 4m LONG	
93		STEEL STOCK RACK, 2.5 x 1.6m (W)	
94		25 (APPROX) x USED TYRES, 195/15, 215/17, 245/16, 225/17, 235/17, 275/16, KUHMO, SUPERCAT, BRIDGESTONE, 3 x BAYS	
95		29 (APPROX) x USED TYRES, 215/17, 225/16, 265/17, 265/18, 245/17, 255/17, CONTINENTAL & GOODYEAR, 3 x BAYS	
96		25 (APPROX) x USED TYRES, 215/17, 275/20, 275/17, 245/19, GT RADIAL, BRIDGESTONE, 3 x BAYS	
97		MOBILE TYRE RACK & CONTENTS, 8 x TYRES, 235/18, 265/17	
98		KINGCRAFT TOOL KIT, WALL MOUNT, SPANNERS, SOCKETS, SCREWDRIVERS, ETC	

LOT	QTY	DESCRIPTION	NOTE
99		POWERBUILT TOOL BOX, 6 DRAWER ON MOBILE 5 DRAWER TROLLEY, INCLUDES SOCKETS SET, KINGCHROME 1/4, 1/2 & 3/8", CHISEL, PUNCHES, SHIFTERS, GRIPS, IMPACT DRIVER	
100		BEISSBARTH MICROLINE EASY WHEEL ALIGNMENT UNIT TYPE: ML8 EASY RADIO 240V, 4 x STANDS WITH PRINTER & PC, SPARES & MANUAL	
101		3 x FANS, 240V	
102		NITROFILL UNIT MOD: E160 NITROGEN, SELF GENERATING UNIT NO BOTTLES NEEDED	
103		COATES TYRE CHANGER, PNEUMATIC WITH INFLATION GAUGE	
104		RATCHET SPANNERS, DIE GRINDER, SOCKETS, TYRE TOOLS, WHEEL BRACE & TOOL BOX, CONTENTS TOP BENCH	


LOT	QTY	DESCRIPTION	NOTE
-----	-----	-------------	------

105  WORKSHOP BENCH, STEEL FRAME, TIMBER TOP, 180 x 90cm, 2 DRAWER WITH AUTO REWIND AIRLINE

106  GARAGE JACK, TROLLEY TYPE, CGL, 2000kg

107  GARAGE JACK, TROLLEY TYPE, CGL, 2000kg

108  TRADEQUIP COIL SPRING COMPRESSOR MOD: 1030

109  PAIR HIGH RISE EXHAUST/TRANS JACKS

LOT	QTY	DESCRIPTION	NOTE
110		 <p>2000 TOYOTA TARAGO VAN REG: WTK 483 VIN: JTEGD32MX00011006 ENG: 2A20015381 ODO: 289,959kms SHOWING 4 CYLINDER 2.4 LITRE, AUTOMATIC TRANSMISSION, PETROL, GREEN DUCCO, 8 SEAT, ALLOY WHEELS, CD PLAYER, TOW BAR, 4 INBUILT DVD PLAYER, NUDGE BAR (NO PAPERS, NO OWNER'S MANUAL, NO SERVICE BOOKS)</p>	
111		 <p>MOLNAR SCISSOR LIFT TYPE: PL92 3000KG RATING 240V</p>	
112		 <p>4 POST HOIST, MOLNAR TYPE: 4488 S/NO: 5525 4T CAPACITY WHEEL ALIGNMENT PADS, JACKING BEAM 415V</p>	
113		 <p>CIG COMPACT 2 ARC WELDER 240V, 10AMP ON WORKSHOP TROLLEY WITH HEAD SHIELD</p>	
114		 <p>ASSORTED HAND TOOLS, WRENCHES, SHIFTERS, TYRE INFLATOR, PRY BAR, RIVET GUN & BATTERY ANALYSER</p>	
115		 <p>PAIR 100mm ANGLE GRINDERS, METABO & B&D</p>	

LOT	QTY	DESCRIPTION	NOTE
116		IMPACT SOCKET SETS, HEX DRIVE & STAR DRIVE	
			
117		KC TOOLS TENSION WRENCH 150FT/LBS 2 TYRE LEVERS TOLEDO LONG HANDLE 1/2" RATCHET WRENCH	
			
118		ARLEC BATTERY CHARGER, 6/12V	
			
119		PAIR CORDLESS DRILLS, 18V, OZITO & DRILL SETS	
			
120		ASSORTED CABLE TIES, SPLIT PINS, GRAB KITS, AIR FITTINGS & HARDWARE	
			
121		TYRE BEAD BREAKER AND DRUM PUMP	
			

LOT	QTY	DESCRIPTION	NOTE
122		FRICTION SAW, ROCKWELL MOD: RT7755 14",355 MM . 240V	
123		AIR LINE RETRACTA REEL, 240V EXTENSION REEL	
124		3 x HYDRAULIC BOTTLE JACKS, 2 x 2T, 1 x 5T	
125		MCCULLOCH CHAIN SAW MOD: M4620	
126		UNIVERSAL HUB SEPARATOR KIT	
127		BLUE POINT 1/2" IMPACT WRENCH, PNEUMATIC MOD: AT555	

LOT	QTY	DESCRIPTION	NOTE
128		BLUE POINT 1/2" IMPACT WRENCH, PNEUMATIC MOD: AT555	
129		3/4" PNEUMATIC IMPACT WRENCH KIT WITH 8 x SOCKETS, UP TO 38mm	
130		1/2" PNEUMATIC IMPACT WRENCH KIT, CP WITH 12 x SOCKETS, UP TO 41mm	
131		3/4" DRIVE SOCKET SET, UP TO 2", 2 x KINGCRAFT 3/8" SOCKET SET & 1/4" DRIVE SET	
132		ASSORTED GEAR & BEARING PULLERS, CYLINDER HONE & ANGLE CLAMP	
133		2 x DIAL INDICATORS & MITUTOYO BORE GAUGE SET	

LOT	QTY	DESCRIPTION	NOTE
134		2 x MICROMETERS, MOORE & WRIGHT, 0-4" AND , MITUTOYO 0-100mm	
135		2 x DIGITAL VERNIERS, BLUE POINT 150mm & 200mm & STUD SPACE MEASURE GAUGE.	
136		PORSCH 1/4" DIE GRINDER KIT, SKI ROPES & 12V PORTABLE AIR COMPRESSOR	
137		6 x 20 LITRE PLASTIC JERRY CANS & JUMPER LEADS	
138		3 x 20 LITRE PLASTIC JERRY CANS, 2 x 20 LITRE PLASTIC WATER CANS, JUMPER LEADS & HOSE	
139		2 x PLUG & PUMP AIR COMPRESSORS, 12V & 2 x TRAILER HUBS	

LOT	QTY	DESCRIPTION	NOTE
140		MOBILE TYRE RACK & CONTENTS, 8 x TYRES, 235/18, 265/17	
			
141		MOBILE TYRE RACK & CONTENTS, 8 x TYRES, 235/18, 265/17	
			
142		MOBILE TYRE RACK & CONTENTS, 8 x TYRES, 235/18, 265/17 & SMALL TROLLEY	
			
143		3 x FIRE EXTINGUISHERS, 4.5kg DRY POWDER	
			
144		LARGE QUANTITY TYRE REPAIR EQUIPMENT, 3 x DIE GRINDERS, 2 x AIR DRILLS, GLUES, RATCHETS, GUNS, HAND TOOLS, 1/2" IMPACT GUN, GRIPS, PLIERS, AIR GUN & HAMMER	
			
145		TWIN BENCH AND TYRE RACK, 2.5 x 6.8 x .65m, MULTI TIER & 2 x FILING CABINETS	
			